

Integrated Retail POS

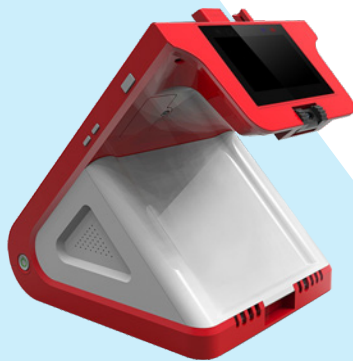


E500

Powered By Android

Powerful & compact | Intelligent Electronic Cash Register for new retailing business

PAX E500 comes with ingenuity quality & solid performance, equipped with multiple peripherals ports, large paper roll, technologies of auto-brightness setting, Magic SR and grease proofing enabling smooth touch of screen. PAX paid much attention to details for your satisfactions only.



Your Payment Partner of Choice

Features & Benefits

All-in-one housing

With "All in one" design concept, the E500 will convert previously cluttered checkout areas into cleaner zones by combining the functions of card payment, dual camera QR payment, and communications of WiFi, Bluetooth, 3G/4G into the small device.

All-in-one payment

As a new generation ECR with Android 6.0 system, PAX E500 accepts any payment method, including card payments - magnetic, chip and contactless, and QR code payment - UnionPay, WeChat and Alipay.

Seamless Transaction

Battery capacity is the weakness of a ECR. PAX E500, inbuilt massive capacity battery of 2600mAh, can keep working over 1 hour without power supply to guarantee faster & more efficient transaction even in peak time.

E500

Integrated Retail POS

Specifications



OS	Android 6.0
Processor	Quad-core Cortex™-A53, 1.2GHZ
Memory	1GB RAM + 8GB FLASH
Display	8 inch all perspective-IPS Screen, 1280 x 800 pixels HD display Capacitive touch screen
Communications	Wi-Fi: 802.11 b/g/n, 2.4G, supports hot spot / bluetooth: BLE 4.0/EDR/BLE / 3G / 4G (optional)
Audio	2 stereo speakers - 4Ω/2W
Printer	3 inch thermal printer head Paper width: 80mm Diameter: 80mm
Peripheral Ports	1 SIM card slot (optional) 1 Micro SD card slot, supports up to 32GB 1 x Cash box RJ11 (24V) 2 x Rs232 2 x USB HOST2.0 1 x Micro USB OTG2.0 1 x HDMI2.0 type A 1 x Audio Jack 2 x LAN
Voltage	Input: 100-240V AC, 50Hz / 60Hz Output: 24V / 4A
Cameras	2 megapixel front fixed focal camera 5 megapixel rear auto zoom camera for 1D& 2D Code scanning
Physical key	1 x ON/OFF Key 1 x Printer paper button
Indicator	Power indicator (green) Printer paper out indicator (yellow) Printer error indicator (red) Charge indicator (red) Information indicators (blue, yellow)
Battery	Li-ion battery, 2600mAh, 3.7V
Certifications	CCC UL / FCC / IC RoHs / CE ANATEL